

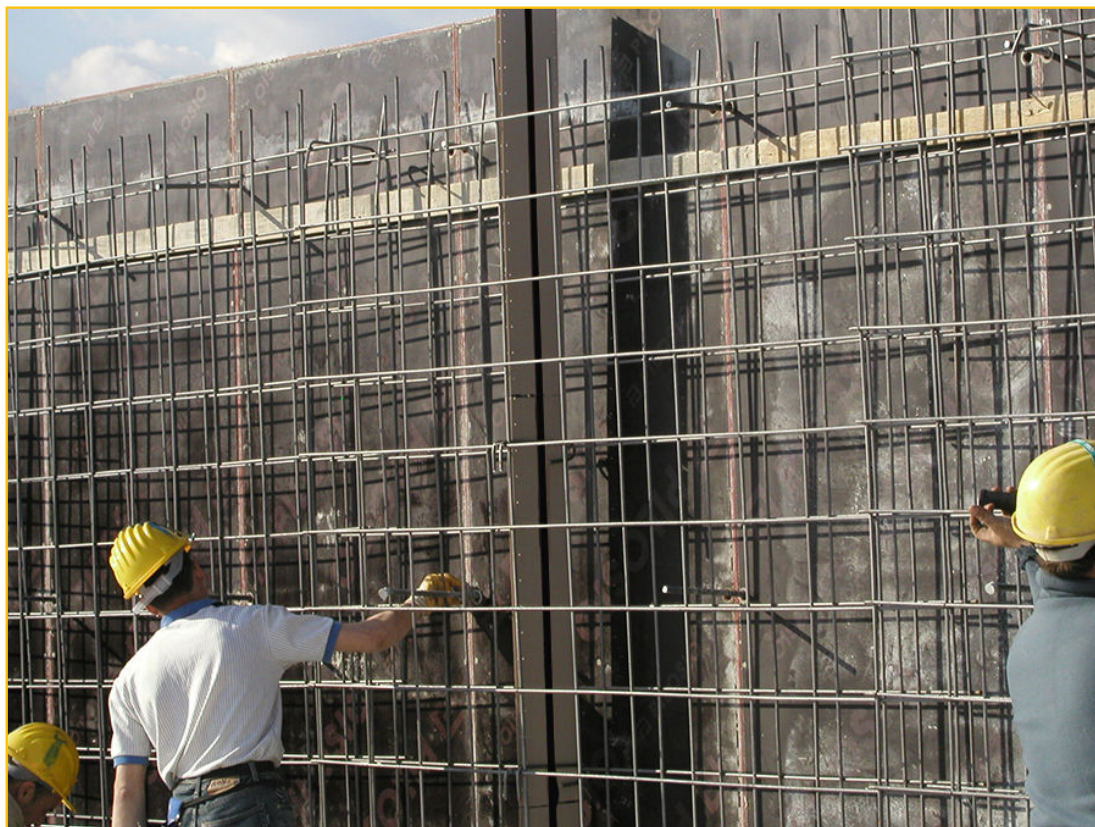


PRODUCT DESCRIPTION

WT BREAK is a self-sealing, hydraulically sealed partition element designed to compartmentalise vertical reinforced concrete structures.

It consists of two box elements fixed together with a specific hydro-expansive gasket in between.

Its use prevents the formation of spontaneous cracks, potential water ingress, due to hydraulic shrinkage and/or differential loads; it only regulates their generation where they occur, sealing them independently in the presence of water.



PRODUCT APPLICATION

For the watertight compartmentalisation of reinforced concrete masonry, continuously constructed such as:

- Retaining walls in general
- Tanks
- Waste water treatment plants
- Supporting walls, etc

ADVANTAGES

- Enables continuity with the waterstop placed in the slab/wall casting
- Perfect hydraulic water-tightness
- Maximum control of shrinkage of reinforced concrete
- Possibility of preparing continuous concrete castings without joints
- Allows the reinforcement bars to be laid without interruptions
- Considerable savings in terms of time and money
- Fast and simple installation, no preparation required
- High mechanical strength suitable for concrete casting stresses

PREPARATION AND APPLICATION

The WT BREAK box profile is designed to be used in combination with \varnothing 12 or \varnothing 14 steel bars, which must be placed inside special grooves.

When applied, it ensures stability and correct positioning of the profile at the intended location in order to compartmentalise vertical castings.

How it works

The box elements have the function of creating “reduced section” areas in the concrete casting, in which tension due to shrinkage will be discharged.

This will result in the formation of cracks only in where WT BREAK is present, which can therefore be considered a “structural fuse”.



When water passes through, the almost straight-line cracks are self-sealed by the spontaneous expansion of the hydro-expansive seal located between plastic profiles.

Application

WT BREAK must be placed on the pre-set point for the formation of the joint, marking the external points of the box element on the horizontal surface, in line with the blocking channels.

The holes must then be made (\varnothing 12-14 mm with a minimum depth of 8 cm), in line with the previously marked points, then inserting the steel rods (\varnothing 12÷14 mm) longer than the height of the wall, which guide the partition elements.

The partition elements must then be tied with wire to the previously laid rebars and to the masonry reinforcement, using the holes on the sides of the boxes.

In the case of connection with WT CONSTRUCTION waterstop (or other hydro-expansive seals), at with the construction joint between the base of the reinforced concrete wall and the foundation, proceed initially with the laying of WT BREAK and then with WT CONSTRUCTION profiles, connecting them with hydro-expansive mastic AKTI-VO 201 (see relevant technical data sheets).

PLEASE NOTE: The castings must be performed continuously, proceeding regularly on both sides of WT BREAK.

Inter-axis positioning

Empirical rule to calculate the position of WT BREAK

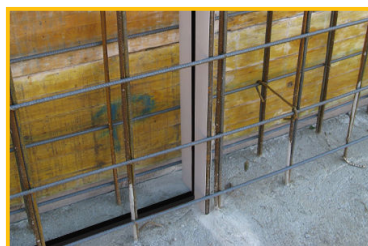
$$I = H/2s$$

where:

I = WT BREAK inter-axis expressed in metres

H = height of the wall expressed in metres

s = thickness of the wall expressed in metres



References available at www.volteco.com

PACKAGING AND STORAGE

WT BREAK is packed in boxes containing 10 bars of 1 m and can be stored for an unlimited period in a covered place.

WARNINGS - IMPORTANT NOTES

Do not tamper with the WT BREAK box profile as this would affect its functionality.

Always join WT BREAK with the hydro-expansive waterstops placed on the horizontal joints.

The WT BREAK box profile must not be held up by brackets and/or elements that can interfere with hydro-expansive seal operation: rods, ties or spacers placed alongside or next to the waterstop inside the profile.

PHYSICAL AND TECHNICAL SPECIFICATIONS

Specification	Values
Thickness	20 mm
Width	175 mm
Length	1,000 mm

SAFETY

Refer to the related Safety Data Sheet.

COPYRIGHT

© Copyright Volteco S.p.A. - All rights reserved.

Information, images and text found in this document are exclusive property of Volteco S.p.A.

They may change anytime without prior notice.

Updated versions of this and other documentation (specification, brochure, other) are on www.volteco.com.



In case of translation text may contain technical and linguistic inaccuracies.

LEGAL NOTES

Note for buyer/installer:

This document prepared by Volteco S.p.A. is provided as an aid and guideline for the buyer/installer.

This does not take into consideration the details of each single operational context, for which Volteco S.p.A. will not be held liable.

This does not change and does not extend the obligations of Volteco S.p.A.

It may vary and the installer is therefore required to update his/her information prior to each application by referring to www.volteco.com.

The above clarifications extend to the pre-post-sales technical/commercial information of the commercial network.

